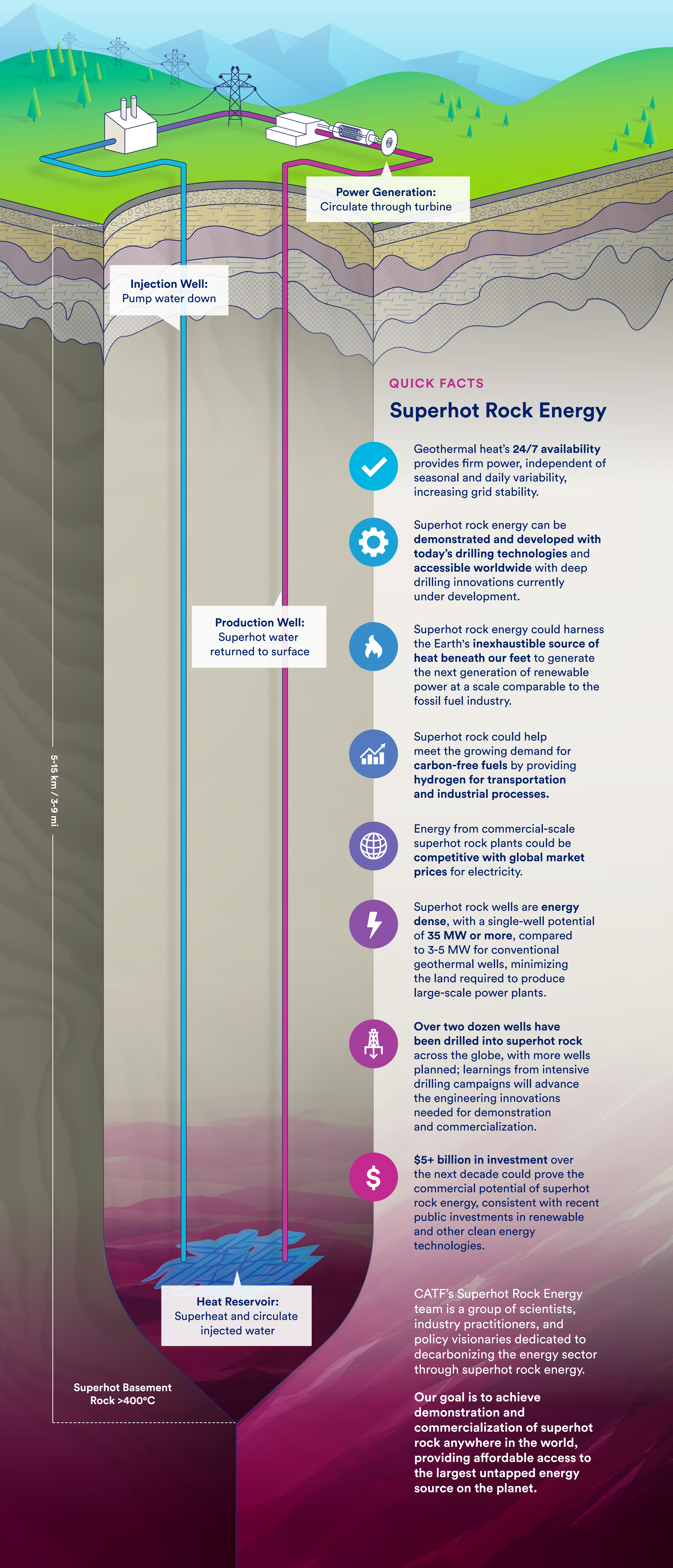


HOW DOES IT WORK?

Superhot Rock Energy

Superhot geothermal energy is mined from natural heat deep within the Earth's crust. Water is injected into superhot dry rock and is circulated through fractures to a production well that provides thermal energy to produce power, heat, or fuels.

Accessing affordable superhot resources could **TRANSFORM** the power industry.



The Path Forward

Superhot rock energy development has already begun in areas where the Earth's heat is close to the surface. With success, intensive drilling campaigns can begin to develop superhot rock in new regions and develop ultra-deep drilling technologies and engineered geothermal systems suited for hotter temperatures.

CATF's vision is to rapidly scale superhot rock from pilot demonstration to commercial demonstration in this decade. Parallel development of deep drilling methods would provide a path to **"geothermal everywhere"** before mid-century, in line with CATF's mission to safeguard against the worst impacts of climate change.

For more information on superhot rock energy, visit our website and download our November 2022 report *Superhot Rock Energy, A Vision for Firm, Global Zero-Carbon Energy* at catf.us/work/superhot-rock/

For inquiries, please contact shr-info@catf.us